

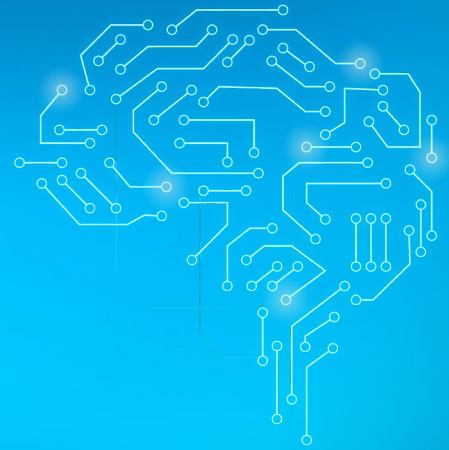
PRESS KIT

TRIBUTECH SOLUTIONS GMBH



ABOUT TRIBUTECH

Tributech is a deep-tech company specializing in secure and scalable data integration across OT, IoT, and IT environments. With locations in Europe, the UAE and the US, we provide a secure data middleware platform that enables standardized, efficient, and secure data integration across industrial ecosystems. In sectors where a trustworthy data foundation is critical, such as manufacturing, energy, and connected infrastructure, our zero-trust technology for data integrity ensures security, reliability, and compliance with evolving regulations. By offering seamless data notarization, an intelligent data layer, and interoperability, Tributech helps organizations future-proof their IoT and OT ecosystems while eliminating the complexity and cost of developing a secure data middleware in-house.



KEY FACTS

Founded in 2018

Funded by the Austrian government and out of stealth in 2022 after 100k+ engineering hours. Headquartered in Linz, Austria.

Global Partner Network

Strategic partner network of 50+ distributors and integrators to serve customers on a global scale.



International Team
Across the EU, US
and MENA



Contributor to
International Stan-
dardization Bodies



Patented
Data Notarization
Technology



Backed by Leading
Public and Private
Investors

OUR MANAGEMENT



Thomas Plank, MA
CEO & Co-Founder

Expert for designing and scaling data-driven services & business models



Patrick Lamplmair
CTO & Co-Founder

Master of electrical engineering and expert for hard- and software product management



Thomas Plank, MA, CEO Tributech

“Future business success is driven by the ability to collaborate and use data across different platforms and companies. This requires selective sharing of trustworthy data as basis for data services or business models.”

CONTACT



Julia Flath, BSc
Digital Marketing Specialist



Tributech Solutions GmbH

Herrenstraße 8, 4020 Linz, Austria

+43 676 44 90 058

press@tributech.io

PARTNERS & CUSTOMERS

